

DELIMBE

Abbaye de Bonport - 27340 PONT DE L'ARCHE

☎ **02 35 23 27 62** - Fax 02 35 23 27 78

INSTRUCTIONS FOR MOUNTING AND USE

FERTILIZER DISTRIBUTOR ELECTRIC SEEDER



We thank you for choosing this electric fertilizer seeder to which we have given the constant care of quality to offer you a first-rate product. In order to make the most of your DELIMBE SEED DRILL we invite you to read carefully all the indications mentioned in this leaflet.

TECHNICAL NOTICE

Marine aluminium frame and plastic tank capacity 70 and 120 liters.

Distributor Dimensions:

- **70 liters:** 450 mm wide – 520 mm deep – 720 mm high – 40 kgs weight.
- **120 liters:** 520 mm wide – 580 mm deep – 900 mm high – 45 kgs weight.

Working width: 12 meters

Adjustable flow according to the opening of the hatch: from 0 to 3000 kg/hour

Supply voltage: 12 volts

Engine power: 250 Watts

Sound emission less than 70 d(B)A

INSTALLATION - MOUNTING

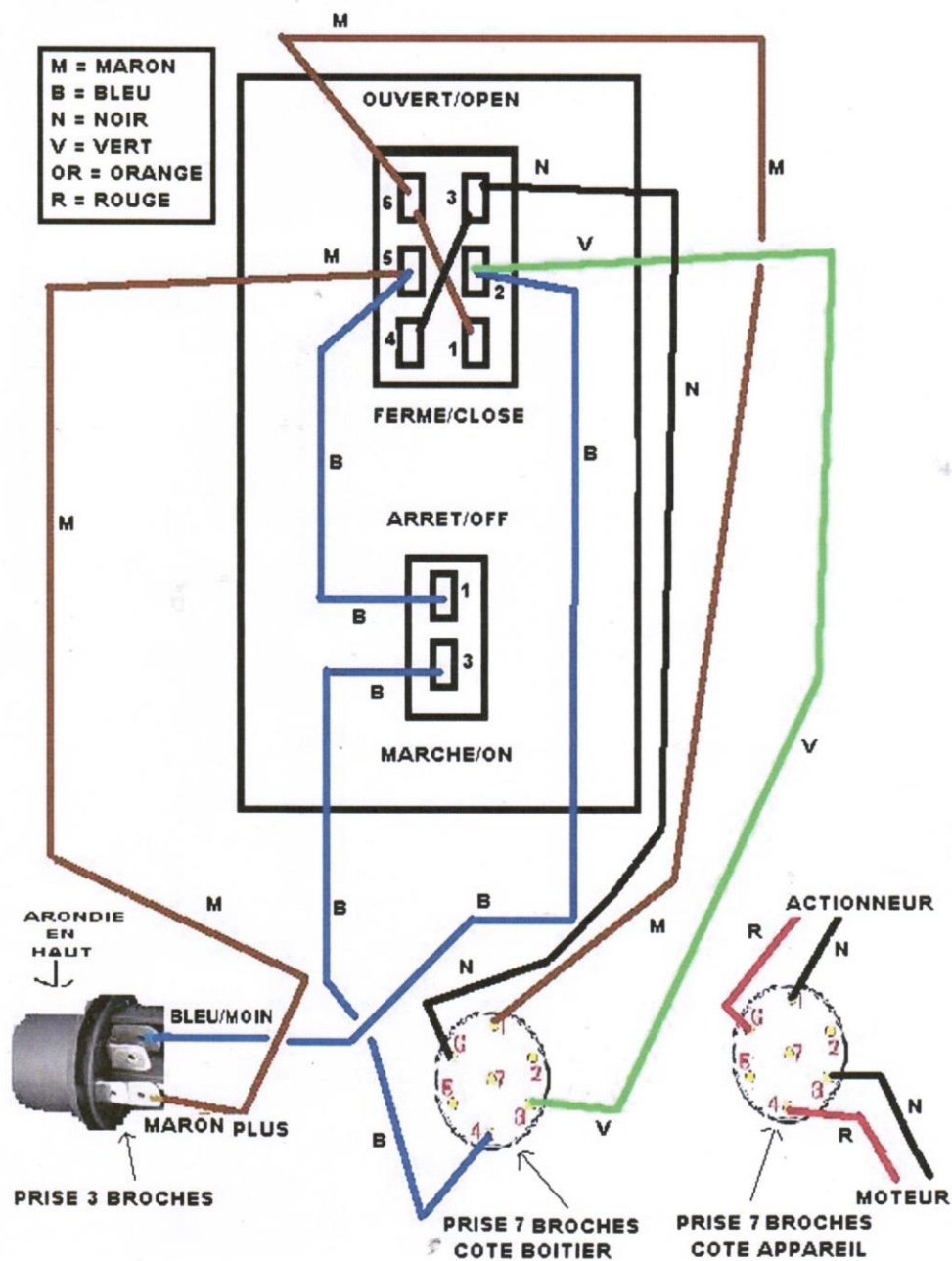
- The SEED DRILL FERTILIZER DELIMBE is designed to be placed on the luggage rack of the quad on tractor lift or any other carrier vehicle.
- Position the device in such a way that there is no risk to the user of injury with the rotating disc.
- When mounting the equipment on the quad, provide protection between the operator and the seeder.
- If the seed drill does not mount directly to the baggage door, if the fixing holes do not fall in front of the baggage door bars, provide fixing hardware.
- It is also possible to bolt a 15 to 20 mm thick sheet metal or marine plywood onto the luggage rack and then attach the DELIMBE to it.
- On some quads the luggage door is full, just drill four holes and attach the DELIMBE with 8 or 10 mm diameter screws and preferably brake nuts.
- Once the DELIMBE is placed on the luggage rack, the operating height will be optimal for a correct seeding on a width of 12 m granulated fertilizer.
- It is not necessary to raise the seeder, the width of 12m of fertilizer work is obtained from 50 cm of height.

SAFETY RULES

- After securing the DELIMBE to the quad, check the stiffness of the assembly.
- When filling, provide a step ladder with safety railing.
- To prevent possible accidents, wear respiratory protection when filling the hopper and using the device, as well as chemical-appropriate clothing.
- Wear full face protection when using on quads
- Before any intervention disconnect the device.
- Keep everyone at a distance (at least 10 m) during work.
- Although protected, do not approach the rotating disc.

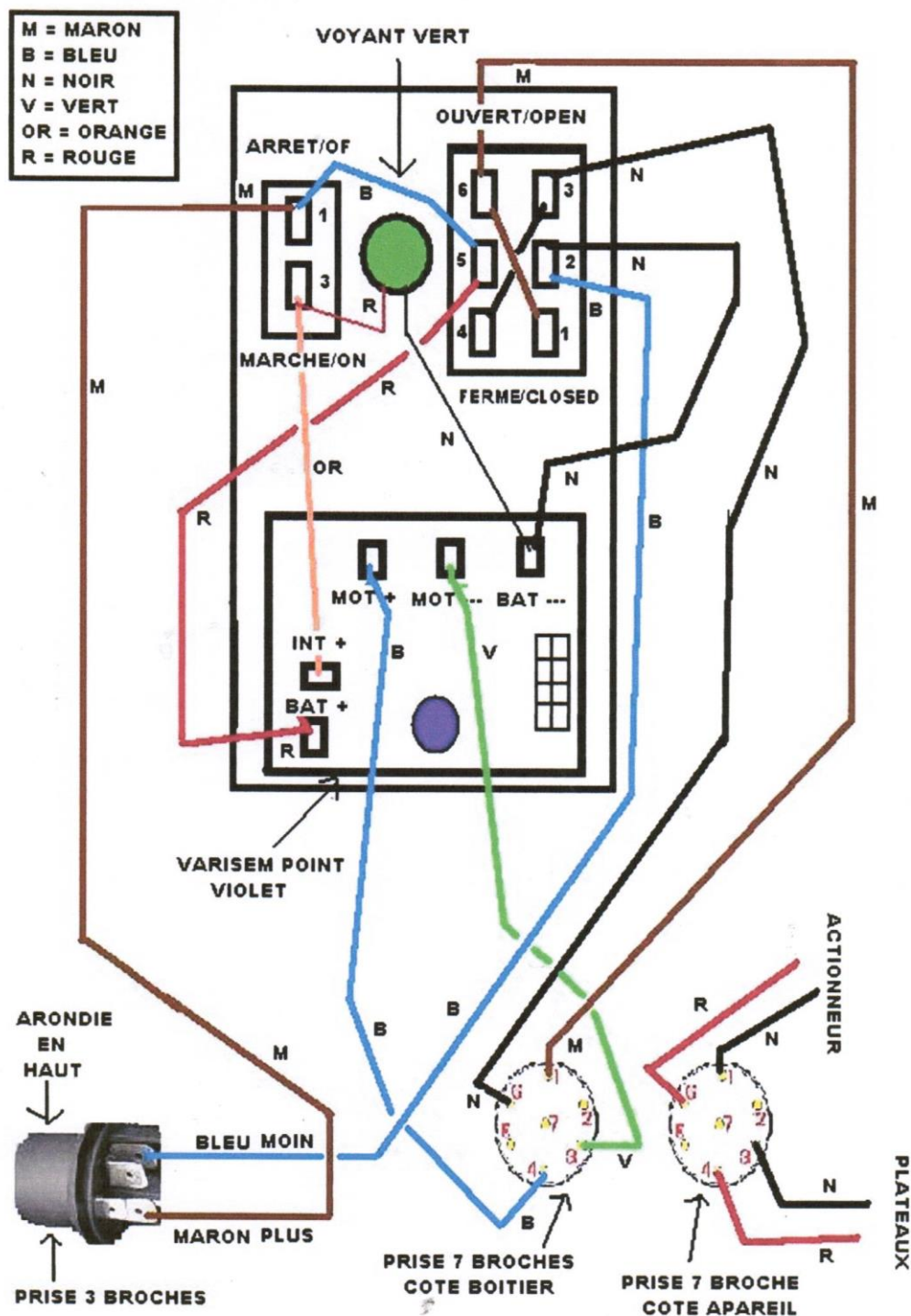
CONNECTION

There are two possibilities of control boxes: the standard for starting and opening/closing the hatch and a width adjustment box that allows in addition to adjusting the working width.



Conditions for electrical connection with the standard enclosure:

- Switch n°1 is used to start and stop the motor that drives the disc.
- Switch n°2 is used to operate the flow opening/closing door (n°1096).



Conditions of electrical connection with the control box width adjustment:

- Switch n°1 is used to start and stop the motor that drives the disc.
- Switch n°2 is used to operate the flow opening/closing door (n°1096).
- The knob switch with scale from 0 to 30 is used to adjust the width, the adjustment is done visually according to the density of the product.

Following this, we must also:

- Provide a power supply of 250Watts, maximum consumption of the distributor at start-up (150 Watts at use).
- Connect the incoming wire harness to the 3-pin socket.
- Check that the disk rotates in the correct direction (counter-clockwise). A label with an arrow on the distributor indicates the direction of rotation.
- The Start and Stop Control Box must be installed at the operator's station.
- Short circuit protection: Connect to a 30-amp fuse.
- In addition to the 3-pin socket, a label on the wire informs you, brown + and blue ground wire.

USE – ADJUSTING

- The DELIMBE FERTILIZER DRILL is designed to be used on the rear of a tractor or quad. For installations deviating from the conditions, consult the manufacturer.
- The pellet is projected in a semicircle by a high-speed disc.
- Distribution is done through the center of the disk (Delimbe system) which prevents breakage of the granule. Indeed, the impact of the pellets is less towards the center than on the ends. A distribution orientation joystick #1085 is provided to optimize the projection of the fertilizer according to the density. This system changes the drop point on the tray. For a standard fertilizer keep the joystick in the middle.
- You can orient the distribution point on the tray with joystick #1085 to refine the projection according to the product.
- On the chassis, a label with two arrows indicates the central position: If the product is projected more to the right, the joystick is oriented to the left. If it is projected more to the left, the joystick is oriented to the right to correct the projection. This allows an optimal projection according to the fertilizer used, its density and its ballistic quality.

DEBIT REGULATION

- The flow rate adjustment and flow opening are controlled by a door puller (n°1096) which is opened more or less according to the desired flow rate, using a slider graduated from 0 to 50 (n°1097).
- The opening/closing of the hatch is electrically actuated by an actuator system.
- Before filling the hopper, check that the motor is running in the correct direction (arrow direction), that the adjustment knob opening is working properly and that there is no foreign object in the tank.

DEBIT CALCULATION

The adjustment table is given in flow rate/hour:

WORKING WIDTH X SPEED X DOSE/HA.

Example: 12 meters wide x 10,000 meters/hour = 120,000 square meters/hour = 12 ha
x 100 kg = 1200 kg/hour, adjust between 31 and 32 on the adjustment table below.

ADJUSTMENT TABLES

<i>Small seeds and slugs</i>									
N°1	1.5 kg/h	N°11	165.0 kg/h	N°21	743.0 kg/h	N°31	1143.0 kg/h	N°41	2005.0 kg/h
N°2	4.5 kg/h	N°12	201.0 kg/h	N°22	774.0 kg/h	N°32	1210.0 kg/h	N°42	2125.0 kg/h
N°3	7.5 kg/h	N°13	245.0 kg/h	N°23	810.0 kg/h	N°33	1280.0 kg/h	N°43	2250.0 kg/h
N°4	18.0 kg/h	N°14	294.0 kg/h	N°24	837.0 kg/h	N°34	1344.0 kg/h	N°44	2375.0 kg/h
N°5	32.0 kg/h	N°15	360.0 kg/h	N°25	873.0 kg/h	N°35	1405.0 kg/h	N°45	2500.0 kg/h
N°6	45.0 kg/h	N°16	435.0 kg/h	N°26	900.0 kg/h	N°36	1485.0 kg/h	N°46	2625.0 kg/h
N°7	63.0 kg/h	N°17	513.0 kg/h	N°27	930.0 kg/h	N°37	1575.0 kg/h	N°47	2750.0 kg/h
N°8	76.0 kg/h	N°18	590.0 kg/h	N°28	964.0 kg/h	N°38	1670.0 kg/h	N°48	2875.0 kg/h
N°9	105.0 kg/h	N°19	660.0 kg/h	N°29	998.0 kg/h	N°39	1780.0 kg/h	N°49	3000.0 kg/h
N°10	132.0 kg/h	N°20	705.0 kg/h	N°30	1073.0 kg/h	N°40	1895.0 kg/h	N°50	3120.0 kg/h

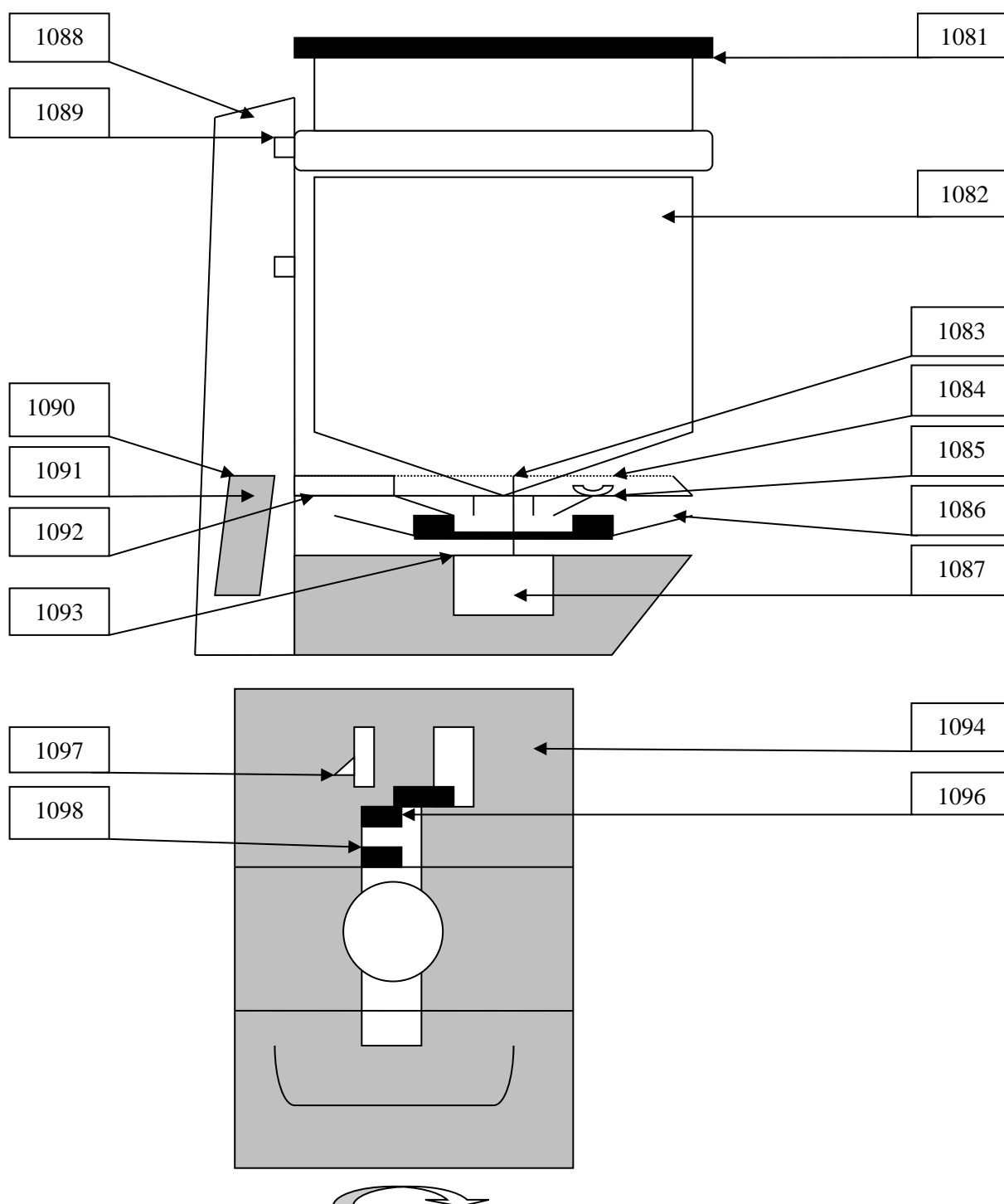
Before sowing, due to the variety of product calibrations, perform a per minute calibration. After calculating the flow/hour, divide it by 60 minutes and check the flow/minute before departure.

After an application distance of about ten meters, check that the application is correct in the width and density of the seedlings.

EMPTYING OF THE TANK: A drain trap located at the base of the tank allows to empty the distributor at the end of use.

STORAGE: in the shelter.

DELIMBE FERTILIZER DRILL LAYOUT



N°	REFERENCE	NAME
1081	COUVPLAST(LITERS)	Cover (specify the end of the reference)
1082	CUVRD(LITERS)	Tank (specify the litrage at the end of reference)
1083	AGITST OU AGITRG	Agitator (specify the type at the end of reference, standard or ray grass)
1084	BOUTMOLETTE	Knurled button
1085		Projection Orientation Joystick
1086	PLATINOXENG	Disc
1087	MOTK76133001FOREL	Motor

1088	/	Chassis
1089	/	Tank Mounting Screws
1090	DEFLDECH	Deflectors
1091	/	Ear fixing screws
1093	/	Tunnel protection actuator
1094	/	Motor screw
1095	/	Actuator
1096	/	Flow Adjustment Pull
1097	CURSEURT24T28	Adjustment slider



SAFETY INSTRUCTIONS

- Before any intervention, disconnect the distributor.
- Although protected on and below, the disc rotates at high speed. No person shall park at or approach the operating distributor within 16 meters.
- Ensure that no one is moving in the spreading area.

According to the safety standards of the European Community, the distributor must be installed at the rear of the driver's seat. Any other installation is strictly forbidden. If in doubt, consult the manufacturer.

Pellets used for application may be toxic. It is essential to wear a mask when filling and using the dispenser.

